



**Pädagogische Hochschule  
Weingarten  
University of Education**

**International Office**



**A Semester Abroad at the  
University of Education Weingarten  
Germany**



# Welcome to Weingarten

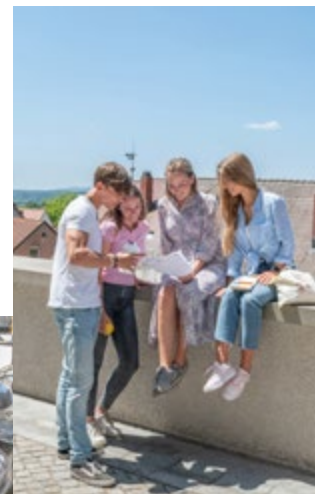
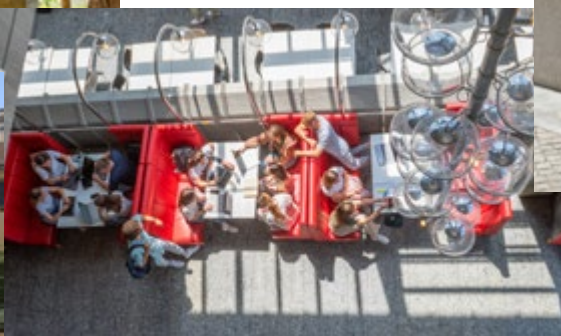
We are pleased that you will be joining us for a semester at the University of Education Weingarten.

All procedures and information that you will need for your semester are included here in in this brochure. Please read carefully and let us know if you have any questions.

Information included:

Academic Calendar  
Your Semester in Weingarten  
Preparing for your stay  
Choosing your classes

Money Matters  
Accommodations  
Internet, Telephone  
Getting to Weingarten





## Academic Calendar

### Winter Term 2025 - 26

Arrival Day:	1 October 2025
Classes:	02 Oct 25 - 24 Jan 26
Christmas Break:	22 Dec 25 - 03 Jan 26
Exams:	29 Jan - 04 Feb 26

### Summer Term 2026

Arrival Day:	1 April 2026
Classes:	02 Apr - 18 Jul 2026
Excursion Week:	26 - 30 May 2026
Exams:	20 - 25 Jul 2026

## Your Semester in Weingarten

Once your university has nominated you for a semester in Weingarten, we will contact you with the necessary procedures. The first and most important is to register with our online portal, Mobility Online. This must be completed before we can issue your Letter of Invitation.

You will be asked to upload a number of documents to complete your application in Mobility Online. If you have any questions about the documents, please let us know. It is very important the address is clearly entered into the database. Double check that the street address, post code and city are correct. This will be used for your Invitation Letter.

If you are coming from outside Europe and need a visa for your stay in Germany, it will be necessary for you to contact the appropriate embassy/consulate in your home country. The embassy will give you details of what you will need for your student visa (i.e. a blocked bank account covering 992€/month as proof of financial means).

One required document for this procedure is the Letter of Invitation. Please note the first date of departure on the Letter of Invitation and be sure that your student visa covers this time frame.



Please contact the German Embassy in your home country for student visa requirements. Once you are in Germany, it is difficult to get the necessary visa to study.

## Choosing Classes

If you are coming with Erasmus, you will need to follow the regulations from your university and choose your classes accordingly and fill out a Learning Agreement.

If you are coming from outside Europe, check with your home university if you need credits and/or grades for your chosen subjects and seminars and discuss how many you will need. We will send you a blank "Learning Agreement" prior to your departure. You can choose subjects using the online course catalogue (LSF) and then fill out the Learning Agreement which you will need to get approved and signed from your home university. You will need to forward the signed agreement to the International Office before you arrive.

Once you are in Weingarten, we will have a class schedule consultation during orientation week to assist you with any questions you may have. During this session, you will officially register for the classes and get to know 'moopaed', our learning tool for seminars. Once classes begin, you will have 5 weeks' time to make any changes to your schedule if needed. These changes must also be made in your Learning Agreement and approved by your home university.

### German Class, Phonetics and a School Internship

An intensive German course is offered before classes begin and there is a German class that meets weekly throughout the semester. Both courses are required for Incoming Students and must be included in your Learning Agreement.

### German phonetic course for Incoming Students:

Exercises range from the basics of listening to the difference in words, pronunciation and gaining self-confidence to express oneself spontaneously in the German language.

### Internship in German Primary School for Incoming Students:

The Internship at the Talschule Weingarten provides an opportunity for international students to gain experience in a primary school setting.

- The students are supported in planning and performing their 'Teach-Learn-Sequences'
- Students receive feedback and constructive input to improve teaching and also for their professional decision-making
- Students get an inside look at the German school environment
- They gain valuable knowledge as well as language training in either German or English

As soon as the course catalog is available, we will send you a link. In the meantime, you may look at past semesters on the University homepage.

LSF - Course Catalogue: <https://lsf.ph-weingarten.de/qjsserverwg/rds?state=user&type=0&application=lsf>

You can change the language / semester on the right, upper side.





## Money Matters

How much money will you need upon arrival in Weingarten? (This can vary and is subject to change.)

Please remember that you will need some cash upon arrival. If you are receiving a scholarship (not Erasmus), it could take up to 4 weeks for the first payment. Therefore, please bring enough money for the first month. (500€ is recommended)

**Bank notes:** Please do not bring any notes larger than 100 EUR. Bank notes of 200 EUR / 500 EUR are difficult to exchange in Germany. Also note that you may not pay for small purchases (such as bus ticket) with a 100 EUR bank note. Have some smaller notes with you.

We will help you organize a bank account here in Weingarten. The first debit to your account will be for the student service fee of 111.- EUR/ semester for the PHW. This must be paid each semester.

The cost of living in Germany per month is approx. 900 - 1,000 EUR / month, rent and misc. costs included. (subject to change) Miscellaneous costs add up to around 250 - 300 EUR

If you live in the student dorm, the rent depends on the size of your room from 270 EUR/ month to 450 EUR/month. The rent will automatically be deducted from your account at the beginning of each month.

If you live in a private (shared) flat, please check your rental contract or ask your landlord when the rent will be deducted.

### Overview of Costs

Student Service fee  
111.- EUR

Rent per month (Seezeit or other dorm)  
approx.. 270 – 450 EUR

Health Insurance  
approx. 130- EUR (by age)

'GEZ' Television license fee (monthly)  
18.36 EUR (divided among roommates)

Further costs for meals / food, freetime activities, etc. approx. 250 – 300 EUR.

Please note that the following costs must be transferred in advance:

Seezeit deposit (refundable)  
800.- EUR

Service fee Seezeit (non-Refundable)  
50.- EUR

Rent for the first month  
(depending on room size)  
270 EUR / 450 EUR



## Money Matters

### Bank Account / Health Insurance

It will be necessary for you to open a German bank account when in Weingarten for you to receive your scholarship (non-ERASMUS+) and pay for rent and health insurance. We will help you open the German account in Germany.

To register to study at any German university, you must show proof of health insurance.

For EU citizens, your European Health Insurance card ("EHIC") should be provided. For students from Turkey, the form T/A 11 if you have it.

Countries outside Europe must sign up for health insurance, i.e. with public health insurance providers such as AOK or TK insurance. We will assist you if needed.

If you take out an insurance policy that does not meet the requirements, it may be necessary to take out a government insurance package after arrival which means paying again.



Please note: The following health insurances from abroad will not be accepted for the enrollment at the University of Education Weingarten:

- Health insurance with a limited sum insured – private insurance, such as from AXA will be checked but if it doesn't meet the requirements, you may be required to take out another policy.
- Travel health insurance, international health insurance, Au Pair insurance

The fees for your German health insurance will automatically be deducted from your account on the 15th of every month. (e.g. the fee for April will be deducted on 15 May).



## Accommodations

You have two options concerning accommodation during your stay at the PHW.

You may choose to take advantage of the dorms provided by "Seezeit" and "Weisse Rose" (two independent third-party dorm companies) or you may look for your own accommodation.

Please note that if you decide to find your own accommodation, we will not be able to help you find a place in the short term. Also note that student accommodations in Weingarten and surrounding areas are in high demand. There are websites available to search for a shared flat. Also, it is helpful to speak to students from your university that have been in Weingarten for a semester.

If you decide to take advantage of the accommodation service, we will send you the application to send to Seezeit and/or Weisse Rose.

Deadlines must be kept or there is the possibility that no room is available. Please also note that it is stipulated that rent for the rooms will be for **five full months** even if you depart early. The last month's rent cannot be deducted from the deposit but must be paid in full.



You will receive the necessary information from Seezeit and/or Weisse Rose in advance before your arrival such as address and cost of rent.

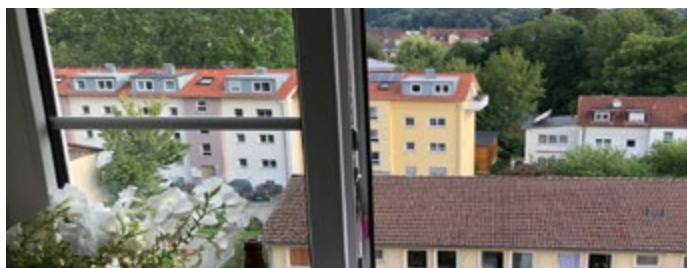
Bedding (sheets, pillow and blanket) can be purchased from 'Seezeit'.

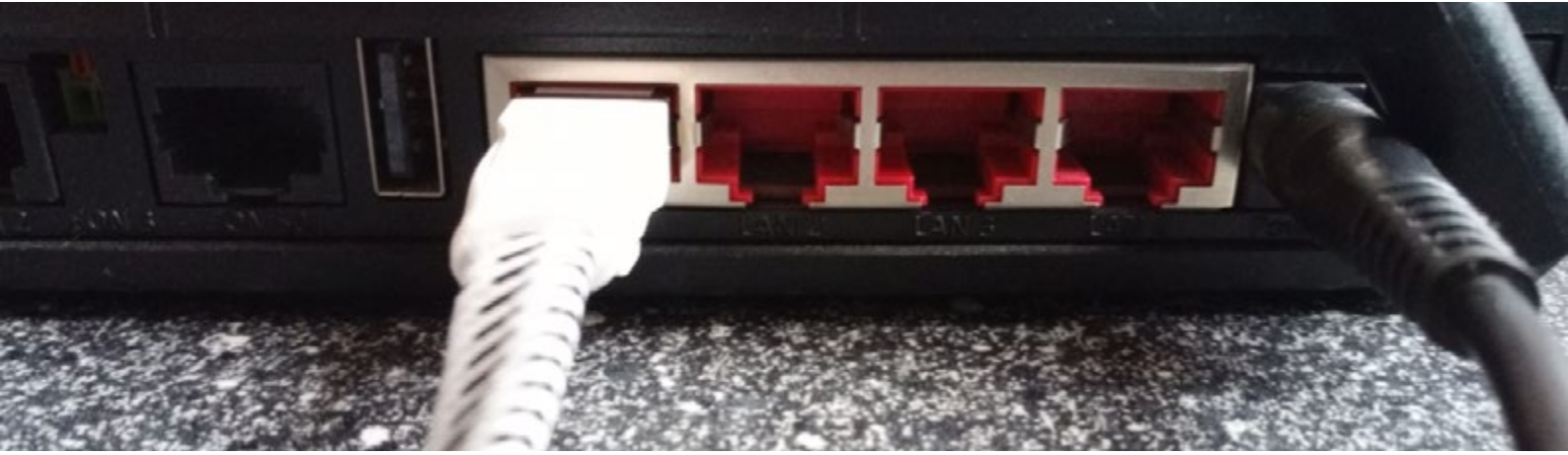
Remember to bring converters and plugs for German outlets.

There is WiFi available in the dorm but if there are any problems, it is also good to have a LAN cable and adaptor plug with you.

Also, be aware of the four seasons in Germany. (summer, autumn, winter, spring). In the winter, temperatures can be as low as  $-10^{\circ}$  Celsius. It can also snow in April. Bring appropriate clothing and shoes.

Ask your mobile service provider about using your mobile phone in Germany. It is also possible to purchase a German SIM card (pre-paid) for your phone.





## Connecting to the internet

Upon arrival, you will receive a student's account at the PHW and you will then be able to use the public computers as well as the available WLAN on campus. The ZenDi team (room NZO.33/5) can help you if you need assistance.

If you rent a dorm room from "Seezeit", you will have LAN available. You will need a network cable with RJ45 connectors. If you are using a new laptop without an integrated network connector, you must then connect with an USB-Ethernet adapter from a USB port on the computer to the network port in the dorm room.

If you live in a shared, private flat, we suggest that you speak with your roommates for advice and assistance before arrival.

## Fees for public TV and radio in Germany

In Germany, it is required that every household pays 18.36 EUR / month for public TV and radio. (see: <http://www.runkfunkbeitrag.de> for more information) Even if you do not have a television in your flat, a laptop or a radio is considered a part of this fee.

This fee may already be included in your rent or not. We recommend that you clarify this with your landlord or roommates before you arrive. In the dorm, the fee is divided between all those living in the flat.





## Getting to Weingarten

Arrival in Ravensburg next to Weingarten at the main train station

Location Weingarten in Baden-Württemberg (NOT Weingarten in Baden)

Zip Code 88250

Population 26,000 inhabitants

Public transportation around Weingarten

Train station Hauptbahnhof Ravensburg (NOT Bahnhof Weingarten)

Bus RAB, Bodo, Long distance coaches (e.g. Flixbus)

Airport	Bodensee Airport Friedrichshafen (FDH)	Distance: 25 km
	Allgäu Airport, Memmingen (FMM)	Distance: 72 km
	Kloten Airport, Zürich (ZRH)	Distance: 114 km
	Flughafen Echterdingen, Stuttgart (STR)	Distance: 172 km
	F.J. Strauß Flughafen, München (MUC)	Distance: 213 km
	Flughafen Frankfurt a. Main, Frankfurt (FRA)	Distance: 373 km

The International Office at the PH Weingarten offers a pick-up service on the official Arrival Day from Hauptbahnhof Ravensburg (Ravensburg main station). We will provide more information before arrival.

Towns and cities around Weingarten

Ravensburg	49,830 inhabitants	Distance: 5 km
Friedrichshafen (Bodensee)	59,170 inhabitants	Distance: 25 km
Ulm	122,801 inhabitants	Distance: 83 km
Zürich	390,082 inhabitants	Distance: 114 km
Stuttgart	574,926 inhabitants	Distance: 172 km
München	1.4 Mio. inhabitants	Distance: 184 km

Time zone Central European Time (CET)

Neighboring universities

Weingarten	Ravensburg Weingarten University
Ravensburg	Duale Hochschule Baden-Württemberg Ravensburg
Friedrichshafen	Duale Hochschule Baden-Württemberg Friedrichshafen Zeppelin University



## Contacts

### Director International Office

Dr. Tim Kaiser

Telephone: + 49 751 501 8238/8421  
E-Mail: [kaisert\(at\)vw.ph-weingarten.de](mailto:kaisert(at)vw.ph-weingarten.de)

### International Coordinator - Overseas

Beate Irion

Telefon: + 49 751 501 8050  
E-Mail: [irion\(at\)ph-weingarten.de](mailto:irion(at)ph-weingarten.de)

### International Coordinator - Erasmus+

Kim Enderle

Telefon: + 49 751 501 8049  
E-Mail: [enderle\(at\)ph-weingarten.de](mailto:enderle(at)ph-weingarten.de)

### Incomings Coordination

Nathalie Steffan

Telefon: + 49 751 501 8945  
E-Mail: [nathalie.steffan\(at\)ph-weingarten.de](mailto:nathalie.steffan(at)ph-weingarten.de)

### Address:

Pädagogische Hochschule Weingarten  
University of Education Weingarten  
Kirchplatz 2  
88250 Weingarten  
Germany

Website: [www.ph-weingarten.de](http://www.ph-weingarten.de)

Email: [internationaloffice@ph-weingarten.de](mailto:internationaloffice@ph-weingarten.de)

Instagram: [internationaloffice\\_phwgt](https://www.instagram.com/internationaloffice_phwgt)